

Label Sizing Guide by Manufacturer

P-Touch Edge Labelers

Leviton

eXtreme 6+ Universal Patch Panel, 48-Port, 110 style 2RU

Part # **69586-C48**

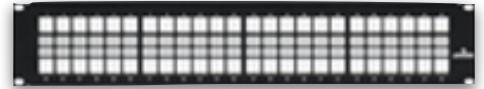
.60" x 6 port 9mm - 3/8" tape



QuickPort Patch Panel, 48-Port, 2RU

Part # **49255-H48 or H24**

.65" x 6 port 9mm - 3/8" tape



QuickPort Angled Patch Panel, 48-Port, 1RU

Part # **49256-D48**

.69" x 6 port 3.5mm - 9/64" tape; TZeN201



E2XHD Angled & Flat Patch Panel, 48-Port, 1RU

Part # **E2X1A-D48 / E2X1F-D48**

.68" x 6 port 3.5mm - 9/64" tape; TZeN201



QuickPort Wallplate

Part # **42080-XXX**

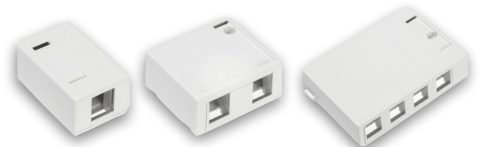
.75" Port Spacing, 2" Long 9mm - 3/8" tape



QuickPort Surface Mount Box

Part # **41089-XXX**

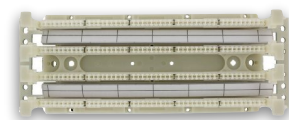
.75" Port Spacing, 2" Long 9mm - 3/8" tape



110 Wiring Block

Universal Label Format - C4 / 4 Pair

1.25", 2 rows x 6 clips, 7.38" 12mm - 1/2" tape



For Technical Support please contact Brother at 800-543-6144

This document is maintained by West Cal Technologies

WestCalTech.com or Training videos on [WestCal YouTube Channel](https://www.youtube.com/channel/UC...)

Label Sizing Guide by Manufacturer

P-Touch Edge Labelers

Allen Tel

High Density Jack Panels

Part # **ATPNL-HD-24 & 48**

.67" x 8 ports

9mm - 3/8" tape



Patch Panel / 110 punch

Part # **AT55B & AT66 series**

.63" x 6 port

9mm - 3/8" tape



Patch Box - 6 & 12 Port

Part # **AT66-6P, AT66-12P**

.63" x 6 port

9mm - 3/8" tape

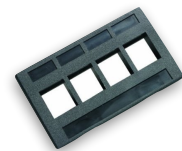


Modular Furniture Faceplate

Part # **ATFM**

.68" x 4 port

9mm - 3/8" tape



Wallplate

Part # **AT70-X-XX**

.80" Port Spacing, 2" Long 9mm - 3/8" tape

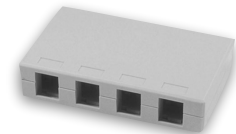


Surface Mount Box - 4 Port

Part # **AT44-XX**

.93" x 4 ports

9mm - 3/8" tape



For Technical Support please contact Brother at 800-543-6144

This document is maintained by West Cal Technologies

WestCalTech.com or Training videos on [WestCal YouTube Channel](https://www.youtube.com/channel/UC...)

Label Sizing Guide by Manufacturer

P-Touch Edge Labelers

Black Box

Patch Panels, 24 & 48 Port

Part # **AT44-XX**

.93" x 4 ports 9mm - 3/8" tape



CommScope

Systemax Patch Panels, Angled or Flat, 24 & 48 Port

Part # **1100GS5-24, 1100GS5-48**

.61 x 6 ports 9mm - 3/8" tape



Systemax LE Series Wallplate - 2,4,6 Port

Part # **M12LE-262, M14LE-262, M16LE-262**

.69" Port Spacing, 2" Long 9mm - 3/8" Tape; TZe221 or HG221



Molex

Shielded Jack Patch Panel, 24 & 48 Port

Part # **PID-00217, PID-00219**

.71 x 24 ports 9mm - 3/8" tape



5E Patch Panel, 24 Port

Part # **PID-00174**

.61 x 6 ports 9mm - 3/8" tape



For Technical Support please contact Brother at 800-543-6144

This document is maintained by West Cal Technologies

WestCalTech.com or Training videos on [WestCal YouTube Channel](https://www.youtube.com/channel/UC...)

Label Sizing Guide by Manufacturer

P-Touch Edge Labelers

Ortronics

Clarity Angled or Flat Patch Panel, 24 & 48 Port

Part # **OR-PHxxxUxx**

.61" x 6 port 9mm - 3/8" tape



Clarity Rear Load Jack Patch Panel, 24 & 48 Port

Part # **PHDPJUxx**

.69" x 24 port 9mm - 3/8" tape



TrakJack Faceplate

Part # **403005xx**

.80" Port Spacing, 1 5/8" Long 3.5mm - 9/64" tape; TZEn201



Panduit

Angled or Flat 110 Patch Panel, 24 & 48 Port

Part # **DP & DPA Series**

.63" x 6 port 9mm - 3/8" tape



Angled or Flat Modular Jack Patch

Part # **CPPxxFM**

.64" x 4 port 9mm - 3/8" tape



Angled or Flat Modular Jack Patch

Part # **CPPxxWBLY**

.64" x 4 port 9mm - 3/8" tape



For Technical Support please contact Brother at 800-543-6144

This document is maintained by West Cal Technologies

WestCalTech.com or Training videos on [WestCal YouTube Channel](https://www.youtube.com/channel/UC...)

Label Sizing Guide by Manufacturer

P-Touch Edge Labelers

Panduit

Flat or Angled Patch Panel, 24 & 48 Port

Part # **UICMPPxxBLY, UICMPPAxxBLY**

0.62" x 4 port 6mm - 1/4" tape



Modular Minicom Patch Panel, 72 Port 2U

Part # **CPA72BLY**

0.62" x 4 port 3.5mm - 9/64" tape; TZeN201



Wallplate

Part # **CFPE, CFPL, CFPSL, CFPHSL**

.70" Port Spacing, 1 13/16" L 9mm - 3/8" tape



For Technical Support please contact Brother at 800-543-6144

This document is maintained by West Cal Technologies

WestCalTech.com or Training videos on [WestCal YouTube Channel](#)