

SOLUTION DATA SHEET

CX6850 | CAT 6A PREMIUM+ UTP SYSTEM

Highest performing, robust Cat 6A system ideal for demanding mission-critical networks

- Innovative crosstalk prevention (XTP) technology in the LANmark-XTP cable assures excellent alien crosstalk (AXT) suppression, with industry-leading channel margin guarantees
- Exceeds ANSI/TIA-568-C.2 Cat 6A and ISO/IEC 11801 Class E_A requirements for channel, link, and component requirements to support IEEE 10GBASE-T (802.3an) networks
- Limited lifetime warranty available when installed by Leviton or Berk-Tek certified contractors
- Channel performance system third-party verified by Intertek Testing Services (ETL)
- Error-free performance up to 10 Gigabit Ethernet with full duplex transmission up to 500MHz
- Backwards compatible with Gigabit Ethernet to provide seamless migration to 10GBASE-T and supports all Cat 6 and Cat 5e system requirements
- Atlas-X1™ connector is independently tested to exceed performance standards and features an innovative design that allows for tool-free terminations

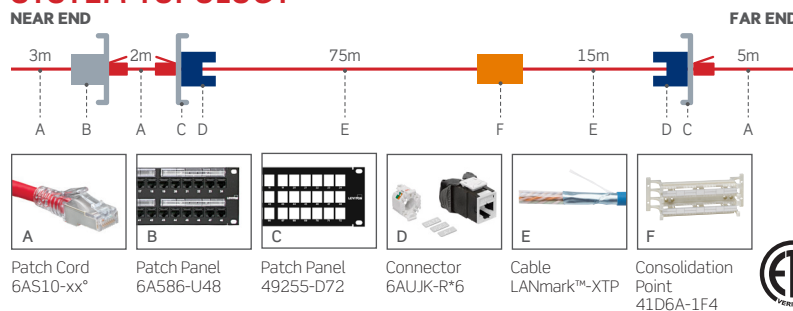
GUARANTEED* SYSTEM PERFORMANCE

CX6850 CAT 6A PREMIUM+ UTP SYSTEM CHANNEL MARGIN GUARANTEES*									
Insertion Loss	NEXT	PSNEXT	ACR-F (ELFEXT)	PSACR-F (PSELFEXT)	Return Loss	ACR-N	PSACR-N	PSANEXT	PSAACR-F
3%	5 dB	6 dB	10 dB	10 dB	4 dB	7 dB	7 dB	5 dB	11 dB

*Values represent guaranteed margins to ANSI/TIA-568-C.2 standard. All parameters comply with ANSI/TIA-568-C.2 Cat 6A and ISO/IEC 11801 Class E_A requirements across the entire frequency range. All values represent worst-case margins for 5- to 100-meter channel configurations. System performance margin guarantees are representative of the specific components and topologies as listed on the CX6850 solution data sheet and third-party test report. Contact your Berk-Tek Leviton Technologies technical representative for more information on alternative components and channel configurations. Details at berkteklevitontechnologies.com.

Product and Performance Warranties and System Guarantees apply exclusively when the system is installed and tested by Leviton Network Solutions Certified Contractors, or Berk-Tek Certified OASIS Integrators. All Terms and Conditions of Leviton and Berk-Tek warranty programs apply.

SYSTEM TOPOLOGY



RECOMMENDED FOR

10GBASE-T network applications
and mission-critical systems

Short links in data centers

High-density cabling and constrained
pathway environments

Optimal total cost of ownership
for financial, health care,
government, transportation, and
education environments

Wireless access points for
IEEE 802.11ac applications

Power over Ethernet and PoE+
applications up to 30 watts and beyond

IP-based security and
building automation systems
utilizing UTP cabling

Optimal support for Energy Efficient
Ethernet in the data center

CAT 6A PREMIUM+



LEVITON CONNECTORS

ATLAS-X1™ CAT 6A COMPONENT-RATED QUICKPORT® CONNECTORS

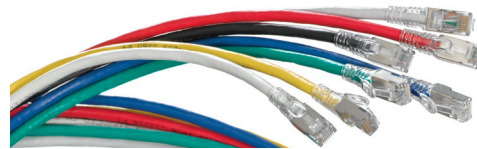
- Independently tested and guaranteed to exceed all component, permanent link, and channel margins
- Patented Retention Force Technology (RFT) protects against time damage from 4- or 6-pin plugs
- Connectors available with internal shutter to protect against dust and debris
- Unique, tool-free design requires no specialized termination or re-termination tool
- Short connector design supports a wider range of applications (e.g. shallow boxes, enclosures, bend radius, etc.)
- Connector supplied with interchangeable icons (VOICE, DATA, AV, and blank) color coded to match the connector face
- Interchangeable icons (available in 13 colors) make it easy to identify and track data, voice, or other functions
- Proudly manufactured in the U.S.



LEVITON PATCH PANELS

CAT 6A E2XHD, 110-STYLE, AND QUICKPORT PATCH PANELS

- Available in cassette-style, 110-Style, and QuickPort flat, angled, recessed angled, recessed, and zero-u configurations in 12-, 24-, 48-, and 72-port counts
- Patented triple-stage compensation design with integrated flexible circuit enhances link and channel performance
- Gas-tight insulation displacement contacts provide excellent conductor retention and resistance to surface-contact oxidation for life of the system
- QuickPort patch panels available for high-density applications — 1RU, 48-port



LEVITON PATCH CORDS

ATLAS-X1 CAT 6A SLIMLINE PATCH CORDS

- ETL verified for TIA Cat 6A component and channel requirements
- Excellent alien crosstalk (AXT) suppression
- 26-gauge stranded for maximum flexibility in any density patching environment
- Nominal outer diameter of .24" to reduce cable pathways in racks and cabinets
- SlimLine-design modular boot supports high-density patching
- Available in lengths of 3', 5', 7', 10', 15', 20' and in 7 colors
- Country of Origin is U.S., manufactured using Berk-Tek cable



BERK-TEK CABLE

LANMARK™-XTP CAT 6A UTP CABLE

- Innovative noise-canceling XTP technology delivers superior alien crosstalk (AXT) suppression
- Manages the convergence of voice, video, and data at 10 gigabit Ethernet speeds, simplifying networks
- Verified performance beyond ANSI/TIA-568-C.2 Category 6A by third-party labs (Intertek ETL)
- Easier installation and cable management with reduced outer diameter of 0.275" (6.9mm), CMP
- Offers superior electrical performance, as well as AXT and EMI resistance without requiring grounding or bonding
- Supports both short and long channels
- Better density and cooling
- Proudly manufactured in the U.S.

PART NUMBERS - Common part numbers shown. Many additional colors, lengths, and other options available online.

LEVITON CONNECTORS	STANDARD	WITH SHUTTER	ADDITIONAL ICONS
Atlas-X1 Cat 6A Component-Rated QuickPort Connector	6AUJK-R*6	6AUJK-S*6	ICONS-IC*
LEVITON E2XHD CASSETTES			
e2XHD Empty Cassette+	E2XHD-BRK		
LEVITON PATCH PANELS	1RU, 24-PORT	1RU, 48-PORT	2RU, 48-PORT
CAT 6A Flat 110-Style Patch Panel	6A586-U24	6A586-U48	6A586-U48
CAT 6A Angled 110-Style Patch Panel	6A587-U24	6A587-U48	6A587-U48
e2XHD High-Density Flat Patch Panel*		E2X1F-D48	E2X4F-192
e2XHD High-Density Angled Patch Panel*		E2X1A-D48	E2X4A-192
Flat QuickPort Patch Panel+	49255-H24	49255-Q48	49255-H48
Angled QuickPort Patch Panel+	49256-H24	49256-D48	49256-H48
LEVITON 110-STYLE WALL-MOUNT WIRING BLOCK KIT	64-PAIR		
CAT 6A 110-Style Wiring Block, wall mount with legs and C-4 clips*	41D6A-1F4		
LEVITON PATCH CORDS			
Atlas-X1 Cat 6A SlimLine Patch Cord	6AS10-xx*		
BERK-TEK CABLE	PLENUM REEL	RISER REEL	
LANmark-XTP Cat 6A UTP Cable, Blue	11082057	11082062	
LANmark-XTP Cat 6A UTP Cable, White	11082058	11082063	
LANmark-XTP Cat 6A UTP Cable, Grey	11082059	11082064	

* = Connector Color: White (W), Lt. Almond (T), Ivory (I), Yellow (Y), Orange (O), Crimson (C), Dark Red (R), Purple (P), Blue (L), Green (V), Grey (G), Black (E), Brown (B)
 + = Sold empty, load with 6AUJK connectors * = Sold empty, load with E2XHD-BRK cassettes * = For consolidation point, legs are non-removable and not sold separately
 xx = Length: 3, 5, 7, 10, 15, 20 feet * = Color: White (W), Yellow (Y), Blue (L), Black (E), Red (R), Green (G), Grey (S)